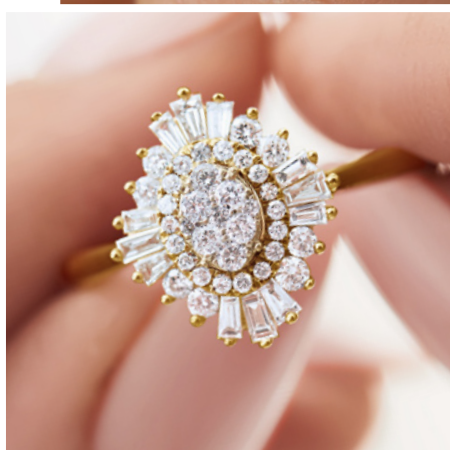
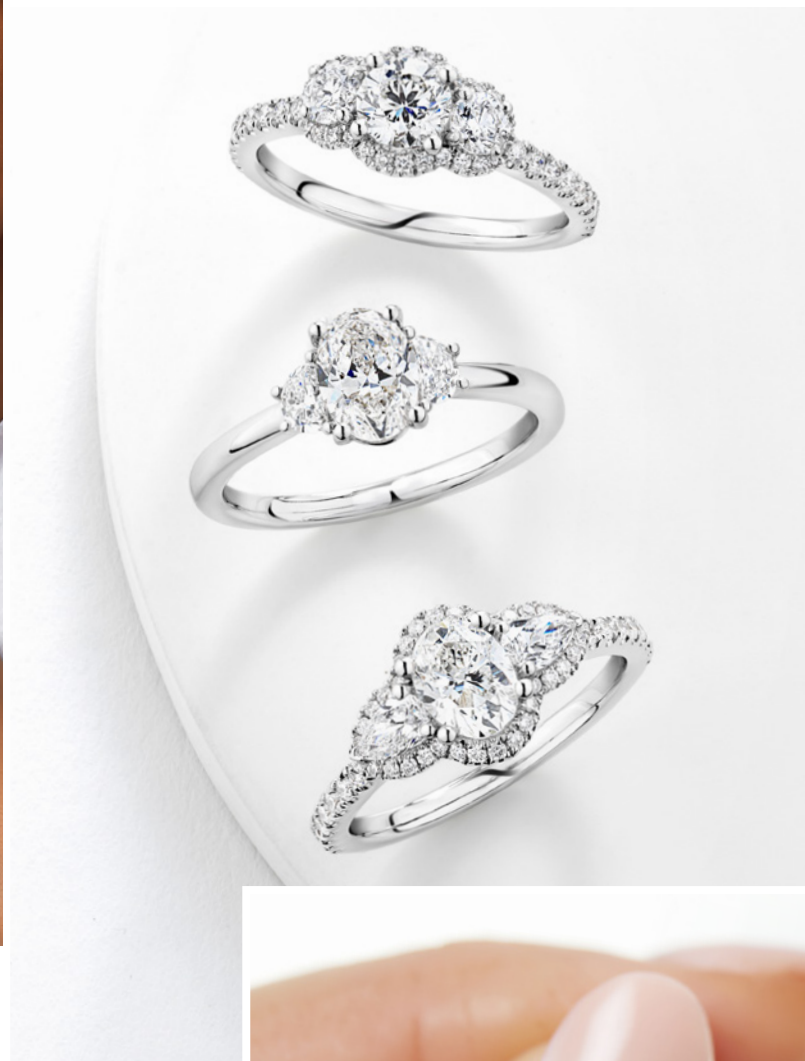




michael hill®

Your Bridal Handbook

Engagement
ring inspiration
& expert tips



FIND THE ONE

Welcome to your essential guide to help you find your perfect engagement ring!

Whether you've been dreaming of your exact perfect ring for years or you don't know where to start, we have you covered. Read on for your key engagement ring need-to-knows, including the top ring styles, diamond knowledge, how to match your wedding band, and more.



THE STYLES TO KNOW

1

Solitaire: the all-time classic

Solitaire rings feature a single diamond. This style lets your sparkling stone own the spotlight, and is so versatile for styling.

2

Halo: a loop of light

One of the most popular ring styles, which surrounds your centre stone with a ring of smaller diamonds for amped-up sparkle and size.

3

Cluster: a mosaic of diamonds

Designs that group together multiple smaller diamonds, for maximum size and sparkle.





4

Three stone: three times the meaning

A timeless engagement ring style with three stones that represent your past, present, and future together.

5

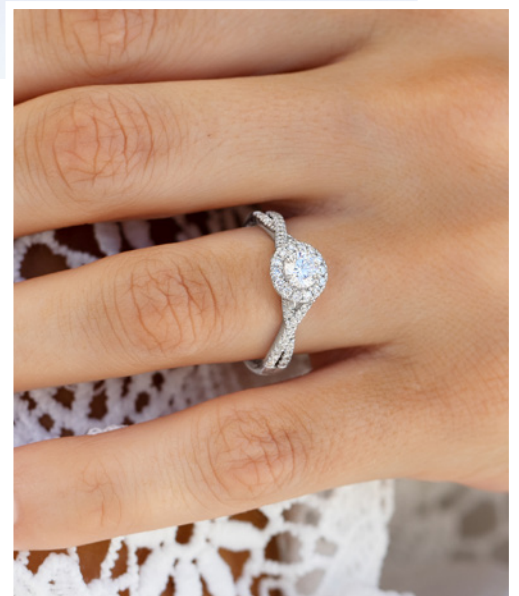
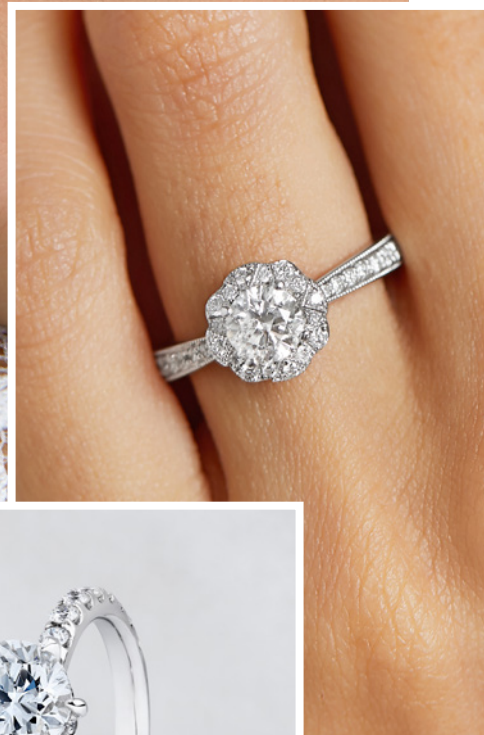
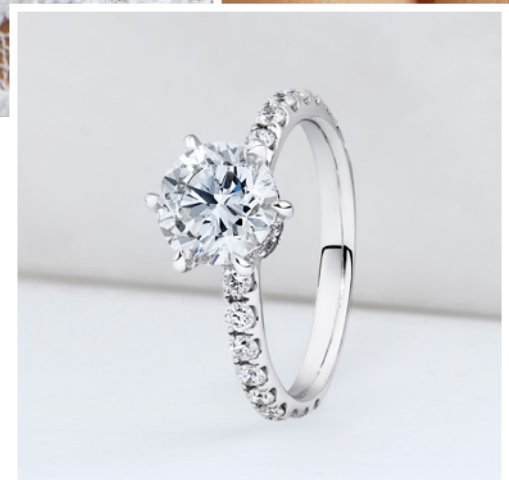
Vintage inspired: beautifully detailed

Timeless, old-world glamour with intricate details and unique shapes.

6

Side accent: sparkle on sparkle

Amplify the brilliance of your ring with a trail of diamonds set into the band.



KNOWLEDGE IS GOLDEN

Yellow, white, and rose gold are equally beautiful options for your ring setting. Our range includes 10kt, 14kt, and 18kt gold - the higher the number, the higher the amount of pure gold in the alloy.



Insider's guide: **OUR EXCLUSIVE COLLECTIONS**

*Discover our unique Bridal Collections at Michael Hill,
and what makes each one special.*

Sir Michael Hill Designer Bridal

Our signature, iconic Designer Bridal Collection. Intricately detailed rings are crafted to the highest standards of workmanship and beauty.

The Solitaire by Michael Hill

Setting the standard, these rings are entirely crafted in our in-house workshop for a masterpiece of perfect balance and outstanding brilliance.

Southern Star

Cut is the most important of the Four Cs, and this Collection features a diamond cut like no other. An incredible 65 facets give the most exquisite sparkle.

Fenix Laboratory-Created Diamonds

Discover the next step in the evolution of diamond jewellery. Premium, certified, laboratory-created diamonds crafted in beautiful rings.

Evermore

Stunning solitaires, sparkling halos, out-of-the-ordinary designs and beautiful coloured gemstones; Evermore offers our widest and most unique range.

Prelude

Celebrate your love when the time is right. Our Prelude Collection features beautiful rings underpinned by real value for money.



When you've found the one, we've got your diamond covered for life, with a Certificate of Authenticity and Lifetime Warranty. (T&Cs apply).

Diamond Details: THE FOUR Cs



Cut

Cut refers to how expertly your diamond has been cut, to maximize the light it reflects. A better cut grade equals more sparkle!



Round



Princess



Pear



Emerald



Cushion



Oval

Jewellery experts consider Cut the absolute most important 'C'. Choose the best quality cut for your budget.

Colour

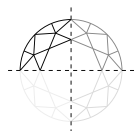
Colour refers to the traces of colour present in a white diamond. Colour is graded D – Z, D being fully colourless and of the highest value.

D	E	F	G	H	I	J	K	L	M			
Colourless			Near Colourless			Faint Yellow						
N	O	P	Q	R	S	T	U	V	W	X	Y	Z
Very Light Yellow						Light Yellow						

Near Colourless diamonds have slight traces of colour that are difficult to see, and are premium stones at a more accessible price.

Clarity

Clarity is affected by natural imperfections. Almost all diamonds have some 'birthmarks', with flawless diamonds being exceptionally rare.



Diamond imperfections are usually invisible to the naked eye, as long as you opt for a clarity grade of Slightly Included (SI) or above.

Carat

Carat refers to the diamond's weight. In multi-stone designs the 'total weight' (TW) is the combined carat weight of the stones.



2.0



1.50



1.0



0.50



0.25

For an impressive look at a more affordable price point, consider a halo or multi-stone design.



CHOOSING YOUR WEDDING & ETERNITY BANDS

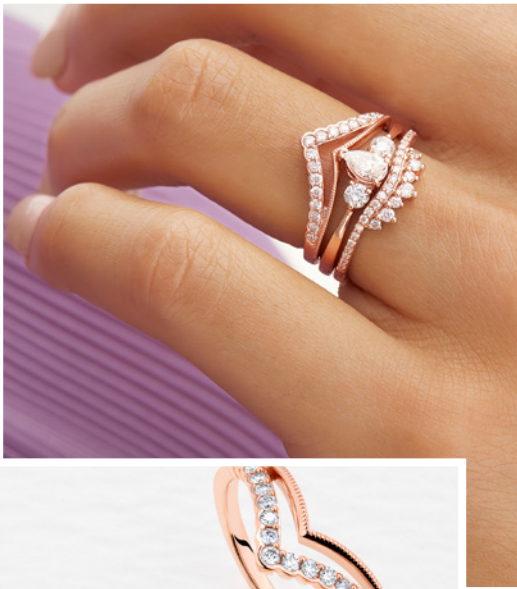


Match your metal colours

The simplest way to create a seamless look between your rings is to match the metal colour of your engagement ring; for instance, yellow gold & yellow gold, or white gold & white gold. If you want to mix it up, adding diamonds is a great way to keep your look cohesive.

To sparkle, or not?

Diamond wedding bands and eternity bands can simply be an added touch of sparkle, but they can also amplify the size of your engagement ring or create a really unique look.



Consider your diamond shapes

Match or contrast your diamond shapes. For instance, pair a round engagement ring shape with a diamond band featuring round cut diamonds. Or, create a textured look with different diamond shapes such as baguette or marquise.

Play with shapes and textures

There are so many styles and shapes to choose from for your bands! From curved and contoured to chevron shapes, twisted and scalloped bands, you can choose a look that's unique and perfect for you.



THE BEST WAY TO CHOOSE...

...Is to try them on! Try a range of different wedding bands and eternity rings to see which you love most. There might be some styles you haven't considered, but which you love the look of when you put them on.





Where to next?

We're here to help

Book your Virtual or In-Store Appointment, or find your nearest store at michaelhill.ca/stores

Get inspired



michaelhill.ca

michael hill