

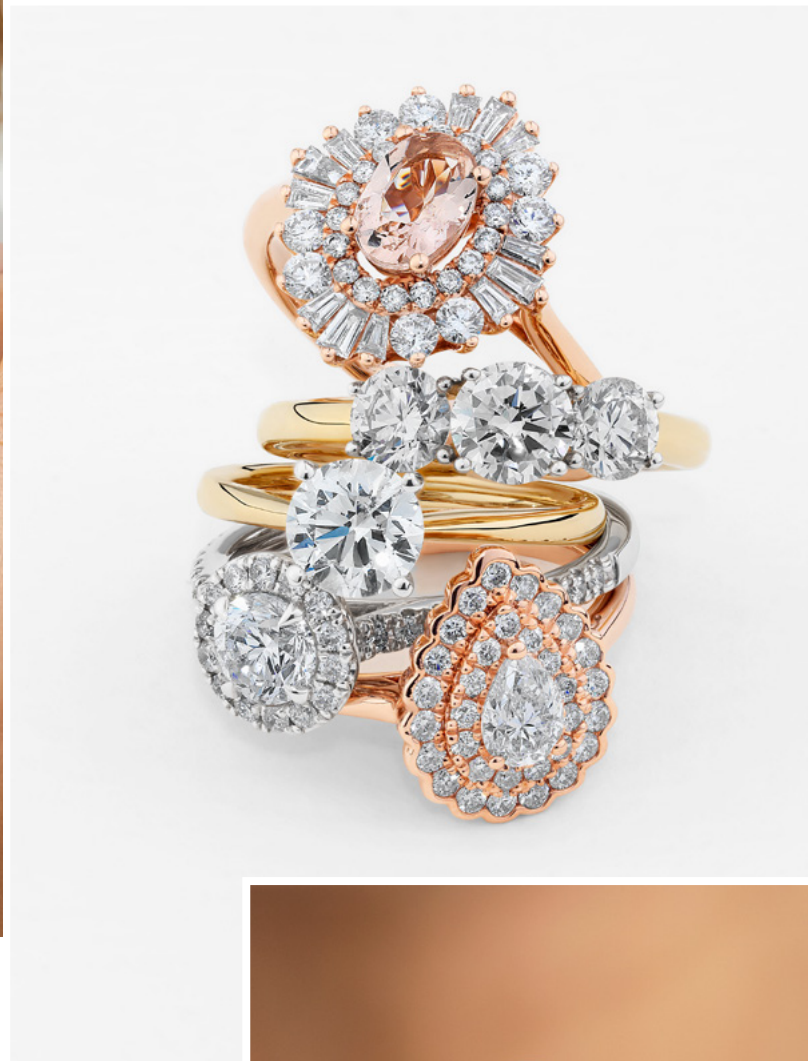


# michael hill<sup>®</sup>

*Your Bridal Handbook*

Inspiration,  
& expertise  
& insider's tips.



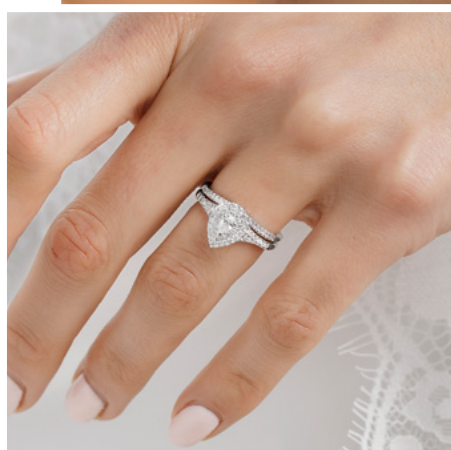


# FIND THE ONE

---

*Welcome to your essential guide to help you find your perfect engagement ring!*

Whatever stage of the journey you're on, we've put together the key information you need to know, including the top styles, diamond details, and how to match your wedding band, plus some insider tips.





# THE STYLES TO KNOW

*To get you inspired, let's start at the beginning: the ring-leading styles.*

1

## **Solitaire: the all-time classic**

Solitaire rings feature a single diamond. This style lets your sparkling stone own the spotlight, and is so versatile for styling.

2

## **Halo: a loop of light**

One of the most popular ring styles, which surrounds your centre stone with a ring of smaller diamonds for amped-up sparkle and size.

## TRY IT ON!

Found some ring styles you love? You can try them on from your living room, with our Virtual Ring Try-On. Head to [michaelhill.ca](https://michaelhill.ca) to try your hand.



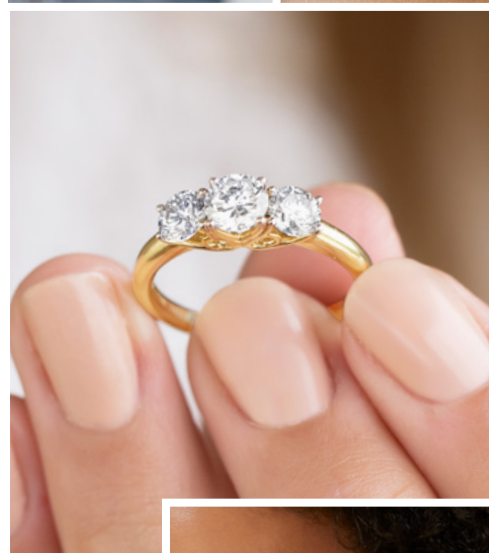




3

### **Cluster: a mosaic of diamonds**

Get maximum size and sparkle with a cluster-style ring, which groups multiple smaller diamonds together in intricate designs.



4

### **Three stone: three times the meaning**

A timeless engagement ring style with three stones that represent your past, present, and future together.

## KNOWLEDGE IS GOLDEN

Choose your favourite shade of gold: yellow, rose, or white, with our range including options in 10kt, 14kt, and 18kt gold. The higher the number, the higher the percentage of pure gold in the alloy. Alloys make the gold stronger and ensure it holds its shape. The type of gold you choose is just a matter of your personal taste!





5

### **Vintage inspired: beautifully detailed**

A touch of old-world glamour never goes astray. Our vintage inspired rings feature intricate details and unique shapes for whimsical beauty.



6

### **Side accent: sparkle on sparkle**

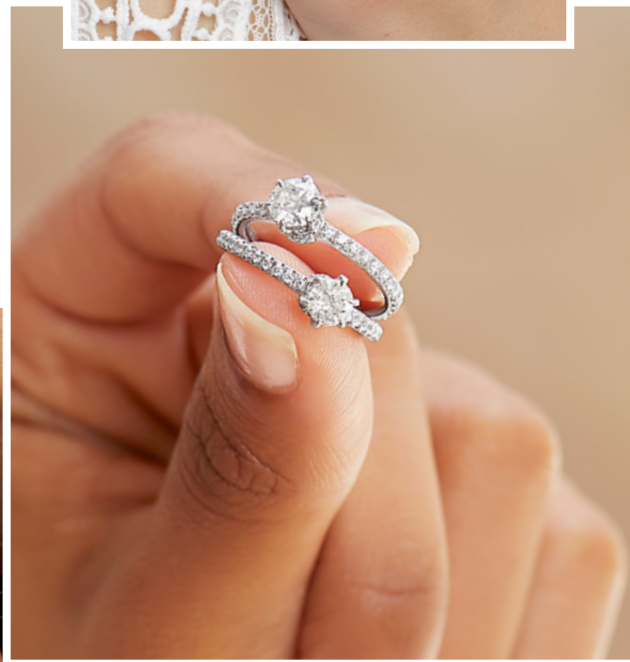
Amplify the brilliance of your engagement ring with a beautiful trail of tiny diamonds, set into the band of your ring.



## A PERFECT FIT

For an extra special ring, we recommend you have your ring size measured professionally. Our in-store teams are happy to help!

If you would prefer to browse or shop from home, book a Virtual Appointment and our team will help you find the perfect fit.





## *Insider's guide:* **OUR BEST-SELLERS**

*Curious what other brides-to-be are loving?  
These beautiful rings, ring styles and Collections  
are best-sellers for a reason!*



1

### **The Solitaire by Michael Hill**

Our premium solitaire collection sets the standard for the most classic of engagement rings. Featuring certified diamonds in an array of cuts and sizes, set in your favourite shade of 18kt gold.



2

### **Halo and double-halo rings**

The true beauty of halo-style engagement rings is that you can achieve a large and sparkling look at a great price. These styles surround your centre diamond with a glimmering halo or double halo of smaller stones, to really amplify your look.



3

### **Sir Michael Hill Designer Bridal Ring**

Our signature bridal Collection features a beautiful range of rings, designed by Sir Michael Hill himself. Our customer favourite is the Grand Aria, a spectacular solitaire design with a diamond pavé band. Featuring the signature touch, a hidden pink sapphire.



## **OUR MOST-LOVED BRIDAL COLLECTION**

Our exclusive Evermore Collection is our customers' favourite. This range truly has a style for every bride, from intricate and unique shapes, to designs with lots of sparkle and embellishment, and modern, timeless and elegant styles.





## *Diamond Details:* **THE FOUR Cs**



Round



Princess



Pear



Emerald

**Cut** refers to how expertly your diamond has been cut, to maximize the light it reflects. In short, a better cut grade equals more sparkle!

### Tip

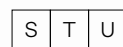
Jewellery experts consider Cut the absolute most important 'C'. Choose the best quality cut that your budget allows.



Colourless



Faint Yellow

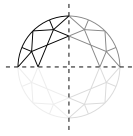


Light Yellow

**Colour** refers to the traces of colour present in a white diamond. Colour is graded D – Z, with D being completely colourless and of the highest value.

### Tip

Near Colourless diamonds graded G or H have traces of colour that are difficult to see, and are more budget friendly options.



**Clarity** is affected by imperfections that naturally occur as a diamond forms. Almost all diamonds have these 'birthmarks', with Flawless diamonds being exceptionally rare.

### Tip

Diamond imperfections are usually invisible to the naked eye, as long as you opt for a clarity grade of Slightly Included (SI) or above.



2.0



1.50



1.0



0.50

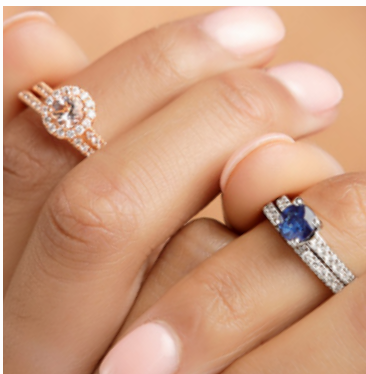


0.25

**Carat** is the diamond's weight. In a solitaire, it's the weight of your single diamond. Multi-stone designs have a 'total weight' (TW) which refers to the combined weight of the stones in your ring.

### Tip

If you want a large look but a high-carat solitaire is out of reach, consider a halo or multi-stone design, for an impressive look at a more affordable price point.



## HOW ABOUT GEMSTONES?

Engagement rings don't have to be diamond. Many brides-to-be choose unique coloured gemstones to express their unique style. Sapphire and ruby are the best choices, as they're the second hardest stones after diamonds, but you can choose the gem with the look and symbolism that you love most.







# CHOOSING YOUR WEDDING & ETERNITY BANDS



## Match your metal colours

The simplest way to create a seamless look between your rings is to match the metal colour of your engagement ring; for instance, yellow gold & yellow gold, or white gold & white gold. If you want to mix it up, adding diamonds is a great way to keep your look cohesive.

## To sparkle, or not?

Diamond wedding bands and eternity bands can simply be an added touch of sparkle, but they can also amplify the size of your engagement ring or create a really unique look.



## Consider your diamond shapes

Match or contrast your diamond shapes. For instance, pair a round engagement ring shape with a diamond band featuring round cut diamonds. Or, create a textured look with different diamond shapes such as baguette or marquise.

## Play with shapes and textures

There are so many styles and shapes to choose from for your bands! From curved and contoured to chevron shapes, twisted and scalloped bands, you can choose a look that's unique and perfect for you.



## THE BEST WAY TO CHOOSE...

...Is to try them on! Try a range of different wedding bands and eternity rings to see which you love most. There might be some styles you haven't considered, but which you love the look of when you put them on.





# Where to next?

1

## Find inspiration & follow us

- ▶ [pinterest.com.au/michaelhillj](https://pinterest.com.au/michaelhillj)
- ▶ [instagram.com/michaelhillj](https://instagram.com/michaelhillj)
- ▶ [facebook.com/michaelhillj](https://facebook.com/michaelhillj)

2

## Shop in-store or online

Manage your schedule and book an In-Store Appointment.

3

## Book your Virtual Appointment

- ▶ [michaelhill.ca/book-appointment](https://michaelhill.ca/book-appointment)

---

Get in touch with us at  
***michaelhill.ca***



When you've found the one, we've got your diamond covered for life, with a Certificate of Authenticity and Lifetime Warranty.

(T&Cs apply).



**michael hill**